



Organizer:  
Working Group on Obesity, Diabetes and the High Risk Patient  
EUROPEAN SOCIETY OF HYPERTENSION



**2020 Meeting of the  
Working Group on  
Obesity, Diabetes and the  
High Risk Patient  
EUROPEAN SOCIETY OF HYPERTENSION**

**08-11/10/2020 - Chalkidiki, Greece  
Blue Lagoon Princess Hotel**

For further information please visit  
Site: [www.obesitydiabeteswg.eu](http://www.obesitydiabeteswg.eu) - [www.eshonline.org](http://www.eshonline.org)  
Or send an e-mail to: [obdiabwg@medcongress.gr](mailto:obdiabwg@medcongress.gr)



**MED CONGRESS**  
Events Organizer  
Kalapothaki 3, GR 54624 Thessaloniki  
T: ++30 231 403 9704 - F: ++30 231 220 6898  
E: [info@medcongress.gr](mailto:info@medcongress.gr)  
[www.medcongress.gr](http://www.medcongress.gr)



Dear friends,

We welcome you to the 2020 Meeting of the Working Group on Obesity, Diabetes and the High Risk Patient of the European Society of Hypertension, in Chalkidiki, Greece.

Chalkidiki is the perfect place to get together, explore the new horizons in our specialty, and expand our knowledge. Every year we ask ourselves 'Can we make it better?', and we believe that this year we have reached new heights. In addition to the usual suspects, we have recruited in the organizing team new blood. Specialists in Obesity, Diabetes and Hypertension, will present up to-date knowledge about diagnosis – prevention and treatment.

We shall be able to convey new and established fact, but, above all, a way of approaching clinical problems which will allow all of us to come back from this experience enriched. There will be also round tables and various interesting lectures. Everyone who will participate, will get 1 out of 6 credits so they can claim to become specialists in hypertension from the ESH.

Take the opportunity to participate in 2020 Meeting of the Working Group on Obesity, Diabetes and the High-Risk Patient of the European Society of Hypertension, discuss with experts in a friendly environment and enjoy the Greek Nature in a beautiful seaside setting.

Best regards,

**Prof. VASILIOS KOTSIS**

Chairman of the Working Group on Obesity,  
Diabetes and the High Risk Patient of the European Society of Hypertension

## THURSDAY OCTOBER 8

12:00-16:00 REGISTRATIONS

17:00-18:00 CLINICAL TRIALS UPDATE

Chairman: *Liakopoulos V.* (Thessaloniki, Greece)

**Risk factors control beyond hypertension to reduce cardiovascular risk** *Lovic D.* (Nis, Serbia)

**Early vascular ageing** *Antza C.* (Thessaloniki, Greece)

**SGLT2 inhibitors effect on blood pressure**  
*Filippatos T.* (Heraklion Crete, Greece)

**Obesity and chronic kidney disease** *Jelaković B.* (Zagreb, Croatia)

**Hypotension, CVD and lessons from space research**  
*Jordan J.* (Germany)

Commentators: *Kakaletsis N.* (Serres, Greece), *Kalyvinos A.* (Drama, Greece), *Lazaridis A.* (Thessaloniki, Greece), *Sfikas G.* (Thessaloniki, Greece)

18:00-18:30 NEW INVESTIGATORS PRESENT ON DIABETES

Chairman: *Siani A.* (Athens, Greece)

**Epidemiology of Diabetes Mellitus** *Bougiouka P.M.* (Athens, Greece)

**New data in type 1 Diabetes Mellitus treatment** *Sakkas D.* (Greece)

**New data in type 2 Diabetes Mellitus treatment** *Ganotopoulou A.* (Athens, Greece)

Commentators: *Zografou I.* (Thessaloniki, Greece) *Natsis M.* (Thessaloniki, Greece) *Koletsos N.* (Thessaloniki, Greece)

18:30-19:00 LECTURES GENETICS IN HYPERTENSION

Chairman: *Kotsis V.* (Thessaloniki, Greece)

**Uromodulin pathway for the blood pressure regulation and hypertension** *Padmanabhan S.* (UK)

## FRIDAY OCTOBER 9

10:00-11:00 **HYPERTENSION**

Chairman: *Kotsis V.* (Thessaloniki, Greece)

**Resistant hypertension** *Redon J.* (Valencia, Spain)

**ESH versus USA guidelines on hypertension in children and adolescents** *Lurbe E.* (Valencia, Spain)

**Cardiometabolic health outcomes among offspring of hypertensive pregnancies** *Stabouli S.* (Thessaloniki, Greece)

**Anemia and stroke: Where do we stand?** *Kaiafa G.* (Thessaloniki, Greece)

Commentators: *Kotronis G.* (Thessaloniki Greece) ,  
*Katsi V.* (Athens, Greece)

11:00-13:00 **ROUND TABLE: TREATMENT OF DIABETES MELLITUS**

Chairman: *Goulis D.* (Thessaloniki, Greece)

**Optimal treatment of diabetes mellitus in pregnancy**  
*Goulis D.* (Thessaloniki, Greece)

Commentator: *Kourtoglou G.* (Thessaloniki, Greece)

**DDP 4 or SGLT- 2? What is the evidence for CV protection?**  
*Papanas N.* (Alexandroupolis, Greece)

**GLP1 in obesity and type2 diabetes patients, where we stand?**  
*Hatziagelaki E.* (Athens, Greece)

**What we learn from the last year clinical trials in T2D**  
*Nilsson P.* (Malmo, Sweden)

Commentators: *Skoutas D.* (Thessaloniki, Greece), *Siani A.* (Athens, Greece), *Goulis D.* (Athens, Greece) , *Siomos K.* (Thessaloniki, Greece), *Mikoudi K.* (Thessaloniki, Greece)

13:00-14:00 **SATELLITE LECTURE/ΔΡΥΦΟΡΙΚΗ ΔΙΑΛΕΞΗ ASTRA-ZENECA** 

14:00-14:45 **SATELLITE LECTURE/ΔΡΥΦΟΡΙΚΗ ΔΙΑΛΕΞΗ PMI SCIENCE** 

14:45-17:00 **BREAK**

17:00-18:00 **ROUND TABLE: SMOKING, OBESITY, INFECTIONS**

Chairman: *Savopoulos C.* (Thessaloniki, Greece)

**e-Smoking and CV disease. Is there a connection?** *Kontakiotis T.*  
(Thessaloniki, Greece)

**Sleep apnea and CV risk** *Pataka A.* (Thessaloniki, Greece)

**Infections of the respiratory system. How can they interfere with CVD?** *Vlachakis D.* (Thessaloniki, Greece)

Commentators: *Zervos N.* (Grevena, Greece), *Apostolopoulou M.*  
(Thessaloniki, Greece), *Karlafti E.* (Thessaloniki, Greece)

18:00-19:00 **SATELLITE LECTURE/ΔΡΥΦΟΡΙΚΗ ΔΙΑΛΕΞΗ PFIZER**



19:00-20:00 **ROUND TABLE: HOW TO TREAT?**

Chairman: *Kotsis V.* (Thessaloniki, Greece)

**Non-stenotic carotid atherosclerosis and stroke risk**  
*Ntaios G.* (Larissa, Greece)

**Blood pressure and executive function in children and adolescents**  
*Chrysaidou K.* (Thessaloniki, Greece)

Commentators: *Anyfanti P.* (Thessaloniki, Greece), *Vasilakou D.*  
(Thessaloniki, Greece), *Vasileiou A.* (Thessaloniki, Greece)

20:00-20:30 **2019 GUIDELINES FOR THE MANAGEMENT OF HYPERTENSION**

Chairman: *Zebekakis P.* (Thessaloniki, Greece), *Manolis A.* (Athens, Greece)

**Guidelines for the management of hypertension**  
*Mancia G.* (Milan, Italy)

20:30-21:00 **SATELLITE LECTURE/ΔΡΥΦΟΡΙΚΗ ΔΙΑΛΕΞΗ SERVIER**



## SATURDAY OCTOBER 10

09:15-09:45 **ROUND TABLE: HOW TO TREAT OBESITY COMORBIDITIES**

Chairman: *Dalekos G.* (Larissa, Greece)

**A patient with obesity, diabetes, and fatty r**  
*Micic D.* (Belgrade, Serbia)

**Hepatocellular Carcinoma and Metabolic Syndrome: the times are changing and so should we!** *Tsoufas G.* (Thessaloniki, Greece)

Commentators: *Poikilidou M.* (Thessaloniki, Greece), *Markoglou N.* (Thessaloniki, Greece), *Bellou A.* (Volos, Greece)

09:45-10:30 **SATELLITE LECTURE/ΔΟΥΡΥΦΟΡΙΚΗ ΔΙΑΛΕΞΗ WINMEDICA**



10:30-11:30 **ROUND TABLE: HOW TO TREAT ATRIAL FIBRILLATION**

Chairman: *Karvounis C.* (Thessaloniki, Greece)

**Inflammation and thrombosis** *Skendros P.* (Alexandroupolis, Greece)

**How to treat a patient with atrial fibrillation, CAD and stroke**  
*Dimitriadis K.* (Athens, Greece)

**Beat-to-beat P-wave morphology as a predictor of paroxysmal atrial fibrillation** *Chouvarda I.* (Thessaloniki, Greece)

**A patient with atrial fibrillation and hemorrhagic stroke**  
*Triantafyllou A.* (Thessaloniki, Greece)

Commentator: *Chatzis D.* (Athens, Greece)

11:30-12:30 **ROUND TABLE: HOW TO TREAT HYPERTENSION**

Chairman: *Hatzitolios A.* (Thessaloniki, Greece)

**Renal denervation. Where new studies are driving to?**  
*Tsioufis K.* (Athens, Greece)

**Renal denervation. Experience from everyday praxis with cases**  
*Ziakas A.* (Thessaloniki, Greece)

**Lessons from metanalysis of RCTs on Hypertension**  
*Thomopoulos C.* (Athens, Greece)

Commentators: *Marketou M.* (Crete, Greece)

12:30-13:30 **SPONSORED SATELLITE SYMPOSIUM BOEHRINGER**



13:30-14:45 **SPONSORED SATELLITE SYMPOSIUM VIANEX**



14:45-17:00 **BREAK**

17:00-18:00 **ROUND TABLE: HOW TO TREAT?**

Chairman: *Kotsis V.* (Thessaloniki, Greece)

**A 80 years old patient with Type 2 diabetes and CKD**

**Trakatelli C.** (Thessaloniki, Greece)

**A patient with secondary hypertension**

**Gkaliagkousi E.** (Thessaloniki, Greece)

**A patient with stage 2 hypertension and sexual dysfunction**

**Doumas M.** (Thessaloniki, Greece)

**A patient with atrial fibrillation and CKD Kreutz R.** (Germany)

Commentators: **Geladari C.** (Athens, Greece), **Sarigianni M.** (Thessaloniki, Greece)

18:00-19:00 **ROUND TABLE HYPERTENSIVE AND DIABETIC NEPHROPATHY**

Chairman: **Passadakis** (Alexandroupolis, Greece)

**Obesity and kidney disease Vlachakos D.** (Athens, Greece)

**Current knowledge on treatment of Diabetic Kidney Disease**

**Sarafidis P.** (Thessaloniki, Greece)

**The FGF23-Klotho machinery axis in CKD: cardiovascular consequences in children Haffner D.** (Hannover, Germany)

Commentators: **Miari F.** (Kavala, Greece)

19:00-19:30 **ROUND TABLE HYPERTENSION**

Chairmen: **Stabouli S,** (Thessaloniki, Greece)

**Isolated nocturnal and daytime hypertension in Children**

**Wuhl E.** (Heidelberg, Germany)

**Sleep disorders and obesity Antza C.** (Thessaloniki, Greece)

**Renovascular hypertension Persu A.,** (Brussels, Belgium)

19:30-20:30 **MEDICINE IN REAL LIFE** (Greek session)

**Education of the patients for the prevention of disease: Discussion for the role of press Kotsis V.** (Thessaloniki, Greece), **Karagiannis A.** (Thessaloniki, Greece), **Anastasiadis K.** (Thessaloniki, Greece),

Journalists: **Litou M., Pitsiakidis N., Varvara F.**


20:30 **CLOSING CEREMONY**

## SATELLITE LECTURES


### Friday October 9

- 13:00-14:00 **SATELLITE LECTURE/ΔΟΥΡΥΦΟΡΙΚΗ ΔΙΑΛΕΞΗ ASTRA-ZENECA**   
ADDRESSING THE CARDIONEPHROMETABOLIC CONTINUUM IN PATIENTS WITH T2DM FROM THE BEGINNING TO THE END FROM DECLARE, TO DAPA-HF AND DAPA-CKD / ΑΝΤΙΜΕΤΩΠΙΖΟΝΤΑΣ ΤΟ ΚΑΡΔΙΟΝΕΦΡΟΜΕΤΑΒΟΛΙΚΟ ΦΑΣΜΑ ΣΤΟΝ ΑΣΘΕΝΗ ΜΕ ΣΔΤ2 ΑΠΟ ΤΗΝ ΑΡΧΗ ΜΕΧΡΙ ΤΟ ΤΕΛΟΣ ΑΠΟ ΤΗΝ DECLARE ΣΤΗ DAPA-HF  
Chairman / Προεδρείο: *Kotsis V. / Κώτσης Β.*  
Lecturer / Ομιλητής: *Raptis A. / Ράπτης Α.*  
  
Commentator / Σχολιαστής: *Savopoulos C. / Σαβόπουλος Χ.*
- 14:00-14:45 **SATELLITE LECTURE/ΔΟΥΡΥΦΟΡΙΚΗ ΔΙΑΛΕΞΗ PMI SCIENCE**   
RISK REDUCTION IN CARDIOVASCULAR DISEASE IN SMOKERS  
Chairman: *Kotsis V.*  
Lecturer: *Zimlichman R.*
- 18:00-19:00 **SATELLITE LECTURE/ΔΟΥΡΥΦΟΡΙΚΗ ΔΙΑΛΕΞΗ PFIZER**   
CEFTAROLINE: A NEW GENERATION CEPHALOSPORIN FOR THE TREATMENT OF CSSTIS AND CAP / ΚΕΦΤΑΡΟΛΙΝΗ: ΜΙΑ ΚΕΦΑΛΟΣΠΟΡΙΝΗ ΝΕΑΣ ΓΕΝΙΑΣ ΓΙΑ ΤΗΝ ΑΝΤΙΜΕΤΩΠΙΣΗ ΤΩΝ CSSTIS ΚΑΙ CAP  
Chairman / Προεδρείο: *Kotsis V. / Κώτσης Β.*  
Lecturer / Ομιλητής: *Karapiperis G. / Καραπιέρης Γ.*
- 20:30-21:00 **SATELLITE LECTURE/ΔΟΥΡΥΦΟΡΙΚΗ ΔΙΑΛΕΞΗ SERVIER**   
CURRENT MANAGEMENT OF PATIENTS WITH DYSLIPIDEMIA / ΣΥΓΧΡΟΝΗ ΑΝΤΙΜΕΤΩΠΙΣΗ ΤΩΝ ΑΣΘΕΝΩΝ ΜΕ ΔΥΣΛΙΠΙΔΑΙΜΙΑ  
Chairman / Προεδρείο: *Kotsis V. / Κώτσης Β.*  
Lecturer / Ομιλητής: *Papanas N. / Παπάνας Ν.*

### Saturday October 10

- 09:45-10:30 **SATELLITE LECTURE/ΔΟΥΡΥΦΟΡΙΚΗ ΔΙΑΛΕΞΗ WINMEDICA**   
FIXED COMBINATIONS BASED ON CALCIUM CHANNEL BLOCKERS AS FIRST LINE TREATMENT FOR HYPERTENSION/ ΣΤΑΘΕΡΟΙ ΣΥΝΔΥΑΣΜΟΙ ΜΕ ΒΑΣΗ ΤΩΝ ΑΝΤΑΓΩΝΙΣΤΗ ΑΣΒΕΣΤΙΟΥ ΣΑΝ ΠΡΩΤΗΣ ΓΡΑΜΜΗΣ ΘΕΡΑΠΕΙΑ ΣΤΗΝ ΑΝΤΙΜΕΤΩΠΙΣΗ ΤΗΣ ΥΠΕΡΤΑΣΗΣ  
Chairman / Προεδρείο: *Δούμας Μ. / Doumas M.*  
Lecturer / Ομιλητής: *Kotsis V. / Κώτσης Β.*



12:30-13:30 **SPONSORED SATELLITE SYMPOSIUM BOEHRINGER**   
THE NEW ERA IN TREATMENT OF DIABETES TYPE 2 PATIENTS. FROM HBA1C, TO CARDIOVASCULAR DEATH REDUCTION, THROUGH THE CARDIORENAL EFFECTS OF EMPAGLIFLOZIN / Η ΝΕΑ ΕΠΟΧΗ ΣΤΗΝ ΑΝΤΙΜΕΤΩΠΙΣΗ ΤΩΝ ΑΤΟΜΩΝ ΜΕ ΔΙΑΒΗΤΗ ΤΥΠΟΥ 2. ΑΠΟ ΤΗ ΜΕΙΩΣΗ ΤΗΣ ΓΛΥΚΟΖΥΛΙΩΜΕΝΗΣ, ΣΤΗ ΜΕΙΩΣΗ ΤΗΣ ΚΑΡΔΙΑΓΓΕΙΑΚΗΣ ΘΝΗΣΙΜΟΤΗΤΑΣ ΜΕ ΟΧΗΜΑ ΤΙΣ ΚΑΡΔΙΟΝΕΦΡΙΚΕΣ ΕΠΙΔΡΑΣΕΙΣ ΤΗΣ ΕΜΠΑΓΛΙΦΛΟΖΙΝΗΣ  
Chairman / Προεδρείο: **Kotsis V. / Κώτσης Β.**  
Lecturer / Ομιλητής: **Skoutas D. / Σκούτας Δ.**  
Lecturer / Ομιλήτρια: **Katsiki N. / Κατσίκη Ν.**

13:30-14:45 **SPONSORED SATELLITE SYMPOSIUM VIANEX**   
THE DEVELOPMENT OF CARDIOVASCULAR DISEASE CAN BE REVERSIBLE WITH EARLY INTERVENTION? / ΑΝΑΣΤΡΕΦΟΝΤΑΣ ΤΗΝ ΕΞΕΛΙΞΗ ΤΗΣ ΚΑΡΔΙΑΓΓΕΙΑΚΗΣ ΝΟΣΟΥ ΜΕ ΤΗΝ ΕΓΚΑΙΡΗ ΠΑΡΕΜΒΑΣΗ

Clinical Cases are presented and discussed / Εισηγούνται και συζητούν κλινικά περιστατικά:

Chairman - Lecturer / Συντονιστής – Ομιλητής: **Kotsis V. / Κώτσης Β.**  
Lecturer / Ομιλητής: **Giannakoulas G. / Γιαννακούλας Γ.**  
Lecturer / Ομιλητής: **Skoutas D. / Σκούτας Δ.**

## FACULTY

*Prof. Apostolopoulou Martha, Specialist in Internal Medicine, (Thessaloniki, Greece)*

*Prof. Chouvarda Ioanna, Assistant Professor in Medical Informatics Lab of Computing, Medical Informatics and Biomedical Imaging Technologies, Aristotle University of Thessaloniki, (Greece)*

*Prof. Dalekos George, Professor of Medicine, Vice President, Institute of Internal Medicine and Hepatology, Head Department of Medicine and Research, Laboratory of Internal Medicine, National Expertise Center of Greece in Autoimmune r Diseases, General University Hospital of Larissa, (Greece)*

*Prof. Doulas Michael, Associate Professor, Internal Medicine, Aristotle University, (Thessaloniki, Greece)*

*Prof. Filippatos Theodosios, MD, MSc, PhD, Assistant Professor of Internal Medicine, Department of Internal Medicine, University Hospital of Heraklion, (Greece)*

*Prof. Gkaliagkousi Eugenia, PhD King's College of London, Assistant Professor in Internal Medicine, Aristotle University of Thessaloniki, (Greece)*

*Prof. Goulis Dimitrios, MD, PhD, Associate Professor in Reproductive Endocrinology, Medical School, Aristotle University of Thessaloniki, Unit of Reproductive Endocrinology, First Department of Obstetrics & Gynecology, Papageorgiou General Hospital, (Thessaloniki, Greece)*

*Prof. Haffner Dieter, M.D, Professor and Chairman at the Department of Pediatric Kidney, r and Metabolic Diseases, Children's Hospital, Hannover Medical School, (Hannover, Germany)*

*Prof. Hatziagelaki Erifili, Associate Professor of Internal Medicine & Metabolic Diseases, 2nd Dept. of Internal Medicine, Research Institute & Diabetes Center, University Hospital "Attikon", Medical School, National and Kapodistrian University of Athens, (Greece)*

*Prof. Hatzitolios Apostolos I., MD, PhD, FESH, Professor of Internal Medicine, Head of First Propedeutic Department of Internal Medicine, AHEPA Hospital, Medical School, Aristotle University of Thessaloniki, Vice-president of Internal Medicine Society of Greece, Vice-president of Hellenic Professional Union of Internists, (Thessaloniki, Greece)*

*Prof. Jelaković Bojan, Department of Nephrology, Hypertension, Dialysis and Transplantation, School of Medicine University of Zagreb, Officer-at-large, European Society of Hypertension Excellence Centres Programme, (Zagreb, Croatia)*

*Prof. Jordan Jens, Director Institute of Aerospace Medicine, German Aerospace Center, (Cologne, Germany)*

*Prof. Kaiafa Georgia, Assistant Professor of Hematology, 1st Medical Propedeutic Dept. of Internal Medicine, Aristotle University of Thessaloniki, AHEPA University Hospital, (Thessaloniki, Greece)*

*Prof. Karagiannis Asterios, Professor of Internal Medicine, Head of the 2nd Propedeutic Department of Internal Medicine, President of the Medical School, Aristotle University of Thessaloniki, (Greece)*

*Prof. Karvounis Charalambos, Professor of Cardiology, First Cardiology Department, AHEPA Hospital, Aristotle University, Thessaloniki (Greece)*

*Prof. Kontakiotis Theodoros, Professor of Pulmonology, Aristotle University of Thessaloniki, Head of the Pulmonary-Tuberculosis Department "G. Papanikolaou" General Hospital, (Thessaloniki, Greece)*

*Prof. Kreutz Reinhold, Institute of Clinical Pharmacology and Toxicology, Charité - University Medicine Berlin, President of European Society of Hypertension, (Berlin, Germany)*

*Prof. Lovic Dragan, FESC, FACP, Clinic for Internal disease Intermedica, Cardiology department, Hypertensive Centre (Nis, Serbia)*

*Prof. Lurbe Empar, MD, PhD, FAHA, Head of Pediatrics of Hospital General Consorcio Valencia, Full Professor at University of Valencia, CIBEROBn, Carlos III Health Institute, Vice President of European Society of Hypertension, (Valencia, Spain)*

*Prof. Mancía Giuseppe, Professor Emeritus University of Milano-Bicocca, Former Head: Department of Internal Medicine, University Milano-Bicocca, S. Gerardo Hospital, Monza, President: European Society of Hypertension (ESH) Foundation, Chairman: ESH Educational Board, Past President: International Society of Hypertension, European Society of Hypertension, European Society of Clinical Investigation, Italian Society of Hypertension, Chairman: Consulta of Italian Scientific Societies for Cardiovascular Prevention, Highly Cited Research in Clinical Medicine (source Clarivate Analytics) (Milan, Italy)*

*Prof. Manolis Athanasios, Director, Department of Cardiology, "Asklepeion" General Hospital, Athens, (Greece)*

*Academician Professor Micic Dragan, Secretary, Department of Medical Sciences, Serbian Academy of Science and Arts, (Belgrade, Serbia)*

## 2020 Meeting of the Working Group on Obesity, Diabetes and the High Risk Patient

*Prof. Nilsson Peter, MD, PhD, Professor of Clinical Cardiovascular Research, Lund University, (Malmo, Sweden)*

*Prof. Ntaios Georgios, Assistant Professor of Internal Medicine, Department of Internal Medicine, University of Thessaly. Secretary General, Hellenic Stroke Organization, (Greece)*

*Prof. Padmanabhan Sandosh, Professor of Cardiovascular Genomics and Therapeutics, BHF Glasgow Cardiovascular Research Centre, Institute of Cardiovascular and Medical Sciences, 126 University Place, University of Glasgow, (UK)*

*Prof. Papanas Nikos, Professor Internal Medicine-Diabetes, Alexandroupolis, Greece*

*Prof. Passadakis Ploumis, Dean of Faculty of Health Sciences, Democritus University of Thrace, Professor of Nephrology, Division of Nephrology, University Hospital of Alexandroupolis, (Greece)*

*Prof. Pataka Athanasia, Assistant Professor of Respiratory Medicine, Aristotle University of Thessaloniki, Respiratory Failure Unit, G. Papanikolaou Hospital, Thessaloniki, (Greece)*

*Prof. Persu Alexandre, MD-PhD, FESC, Cardiology Department, Cliniques Universitaires Saint Luc, Université Catholique de Louvain (Brussels, Belgium)*

*Prof. Redon Jose, University Clinic Hospital of Valencia, University of Valencia, CIBERO3n, Carlos III Health Institute (Valencia, Spain)*

*Prof. Savopoulos Christos G., Professor of Internal Medicine, 1st Medical Propedeutic Department of Internal Medicine, Stroke Unit, Aristotles University of Thessaloniki, AHEPA University Hospital, (Thessaloniki, Greece)*

*Prof. Stabouli Stella, Associate Professor Pediatric Nephrology, 1st Department of Pediatrics, Aristotle University (Thessaloniki, Greece)*

*Prof. Trakatelli Christina, MD, PhD, Assistant Professor of Internal Medicine, 3rd Department of Internal Medicine, Aristotle University, Thessaloniki, (Greece)*

*Prof. Tsioufis Konstantinos, MD, FESC, FACC, Professor of Cardiology, National and Kapodistrian University of Athens, (Greece), ex-President of Hellenic society of Cardiology, ex-President of European Society of Hypertension*

*Prof. Vlachakos Dimitrios, Ph.D., Professor of Medicine and Nephrology, National Kapodistrian Athens, University Medical School Director, Renal Unit, ATTIKON University Hospital, (Athens, Greece)*

*Prof. Zebekakis Pantelis, Professor of Internal Medicine, Chairman of First Department of Internal Medicine, AHEPA University Hospital of Thessaloniki, (Greece)*

*Prof. Zimlichman Reuven, Head of the Brunner Institute for Cardiovascular Research, Tel Aviv University, (Tel Aviv, Israel)*

*Dr. Antza Christina, MSc (Res), PhD, Resident at 3rd Department of Internal Medicine, Papageorgiou Hospital, Aristotle University of Thessaloniki, (Greece)*

*Dr. Geladari Charalampia, MD, PhD, Internist, Postdoctoral Fellow at the Hypertension and Cardiovascular Disease Prevention Center, Athens Medical Group, Psychiko Clinic (Athens, Greece)*

*Dr. Gourlis Dimitris, MD, EHS, Clinical hypertension specialist, Medical Affairs Lead AZ, (Athens, Greece)*

*Dr. Kakaletsis Nikolaos, Internist MD, MSc, Phd Candidate Medical School, Aristotle University of Thessaloniki, AHEPA University Hospital of Thessaloniki, (Greece)*

*Dr. Katsi Vasiliki, Cardiologist, MD PhD, ESH Specialist Hippocraton Athens Hospital (Athens, Greece)*

*Dr. Kotronis Georgios, Internist, Senior Clinical Fellow in Diabetes, Diabetic Foot, King's College Hospital, London, (UK)*

*Dr. Miari Foteini, Consultant Nephrologist at Nephrology Department and Dialysis Unit, General Hospital of Kavala, (Greece)*

*Dr. Poikilidou Maria, Internal Medicine (Thessaloniki, Greece)*

*Dr. Siani Alexandra, MD, M.Sc., Director of Department of Internal Medicine and Diabetic Clinic, General Hospital of Athens "Elpis", (Athens, Greece)*

*Dr. Skoutas Dimitrios, MD, PhD, Internal Medicine Physician -Specialist in Diabetes Mellitus, Scientific Director «Sarařanos», Private Hospital, Head of Pathological Sector of Rehabilitation Center «Anagennisi», (Thessaloniki, Greece)*

*Prof. Wühl Elke, M.D., Professor of Pediatrics and Pediatric Nephrology, Center for Pediatrics and Adolescent Medicine, University of Heidelberg, (Heidelberg, Germany)*

*Dr. Zervos Nikolaos, Internal Medicine Clinic, General Hospital of Grevena. (Grevena, Greece)*

*Anastasiadis Kyriakos, MD, PhD, FETCS, FCCP, FESC, Professor of Cardiac Surgery, Aristotle University of Thessaloniki, Head of Cardiothoracic Department, AHEPA University Hospital, Deputy Head of the School of Medicine, Aristotle University of Thessaloniki (Thessaloniki, Greece)*

*Anyfanti Panagiota, MD, MSc, PhD, Research Fellow 3rd Department of Internal Medicine, Papageorgiou Hospital, Aristotle University of Thessaloniki, (Greece)*

*Bellou Aristeia, MD, PhD, Hepatologist-Internal Medicine Specialist (Volos, Greece)*

*Bougiouka Paraskevi – Maria, Resident in endocrinology department of Alexandra Hospital, Student of Msc Diabetes and Obesity, (Athens, Greece)*

*Chatzis Dimitrios, MD, PhD, Cardiologist, Clinical Hypertension Specialist, European University Cyprus, (Athens, Greece)*

*Chrysaidou Katerina, MD, MSc, Research Fellow of 1st Pediatric Department of Aristotle University of Thessaloniki, (Greece)*

*Dimitriadis Kyriakos, Consultant Cardiologist, Cardiology Department Hippokraton Hospital (Athens, Greece)*

*Ganotopoulou Asimina, MD, cPhD, Internal Medicine Physician- Specialist in Diabetes Mellitus, Scientific and research associate at Diabetologic department of Tzaneio Hospital at Piraeus, (Athens, Greece)*

*Giannakoulas George, MD, PhD, Associate Professor in Cardiology, Aristotle University of Thessaloniki, AHEPA Hospital, Cardiology Unit (Thessaloniki, Greece)*

*Kalyvinos Avgoustinos, GM/FD Director of Paranesti Health Center, (Drama, Greece)*

## 2020 Meeting of the Working Group on Obesity, Diabetes and the High Risk Patient

**Katsiki Niki**, MSc, PhD, MD, FRSPH, Internist Specialist, Academic Fellow AUT, Diabetes Center, Lipids & Obesity Clinic, Endocrinology-Metabolism Department 1st Pathology Clinic University Hospital "AHEPA", Board Member of Hellenic Atherosclerosis Society, IASO/EASO Scope Member, EASD Diabetes & Cardiovascular Disease Group Member, International Expert Lipid Panel (ILEP) Member, (Greece)

**Karapiperis Dimitrios**, MD, Colonel, Greek Army, Infectious Diseases Specialist, Head of Infectious Diseases Department, 424 General Military Teaching Hospital of Thessaloniki, (Thessaloniki, Greece)

**Karlafti Eleni**, MD, PhD, AHEPA University Hospital of Thessaloniki, Subcommittee of Young Internists of European Federation of Internal Medicine- EFIM (Greece)

**Koletsos Nikolaos**, M.D., MSc, Resident at the 3rd Department of Internal Medicine, Papageorgiou General Hospital, Aristotle University of Thessaloniki, (Greece)

**Kourtoglou George**, MD, PhD, Specialist in Internal Medicine -Diabetes, Head of the Department of Internal Medicine and Diabetes, St Luke's Gen Hospital, (Thessaloniki, Greece)

**Lazaridis Antonios**, Internal Medicine Consultant, 3rd Department of Internal Medicine, Aristotle University of Thessaloniki, Papageorgiou Hospital, (Thessaloniki, Greece)

**Liakopoulos Vassilios**, MD, PhD, Associate Professor of Nephrology, Division of Nephrology and Hypertension, 1st Department of Internal Medicine, Medical School, Aristotle University of Thessaloniki (Greece)

**Marketou Maria**, MD, PhD, FESC, ESH, Consultant, Hypertension and Cardiovascular Prevention Clinic, Cardiology Dpt., Heraklion University Hospital (Crete, Greece)

**Markoglou Nikos**, Physician, European Hypertension specialist, (Thessaloniki, Greece)

**Mikoudi Kalliopi**, Consultant of Internal Medicine, 1st Internal Medicine Department-Diabetes Center, General Hospital Papageorgiou, (Thessaloniki, Greece)

**Natsis Michael**, Clinical Dietitian MSc, PhD, Candidate Medical School Aristotle University of Thessaloniki, (Greece)

**Raptis Athanassios**, Associate Professor of Internal Medicine, Second Department of Internal Medicine, Attikon University Hospital, National and Kapodistrian University, (Athens, Greece)

**Sakkas Dimitrios**, MD, MSc, Diabetes Mellitus and Obesity, Resuscitation, (Greece)

**Sarafidis Pantelis**, MD, MSc, PhD, Associate Professor in Nephrology, School of Medicine, Aristotle University of Thessaloniki, (Thessaloniki, Greece)

**Sarigianni Maria**, MD, PhD, Consultant in Internal Medicine, 3rd Medical Department of Aristotle University of Thessaloniki, (Greece)

**Siomos Kyros**, MD, PhD, Internal medicine specialist, Diabetologist, Director TYPET, (Thessaloniki, Greece)

**Skendros Panagiotis**, Associate Professor of Internal Medicine, First Department of Internal Medicine, University Hospital of Alexandroupolis, Democritus University of Thrace, (Alexandroupolis, Greece)

**Sfikas Georgios**, MD, LT COLONEL HEL(A), Consultant in Internal Medicine, Chief of Lipidology and Atherosclerosis Department, 424 General Military Hospital of Thessaloniki, (Greece)

**Thomopoulos Costas**, MD, Consultant Cardiologist, Helena Venizelou Hospital, (Athens, Greece)

**Triantafyllou Areti**, Assistant Professor of Internal Medicine, 3rd Clinic of Internal Medicine, Papageorgiou Hospital, Aristotle University of Thessaloniki, (Thessaloniki, Greece)

**Tsoulfas Georgios**, Associate Professor of Surgery, Aristotle University of Thessaloniki, (Greece)

**Vasilakou Despoina**, MD, MSc, Clinical nutrition specialist, Resident at 3rd Department of Internal Medicine, Papageorgiou Hospital, Aristotle University, (Thessaloniki, Greece)

**Vasileiou Aikaterini-Maria**, Consultant of Internal Medicine, trained in Diabetes Mellitus, Internal Medicine Department, General Hospital of Giannitsa (Greece)

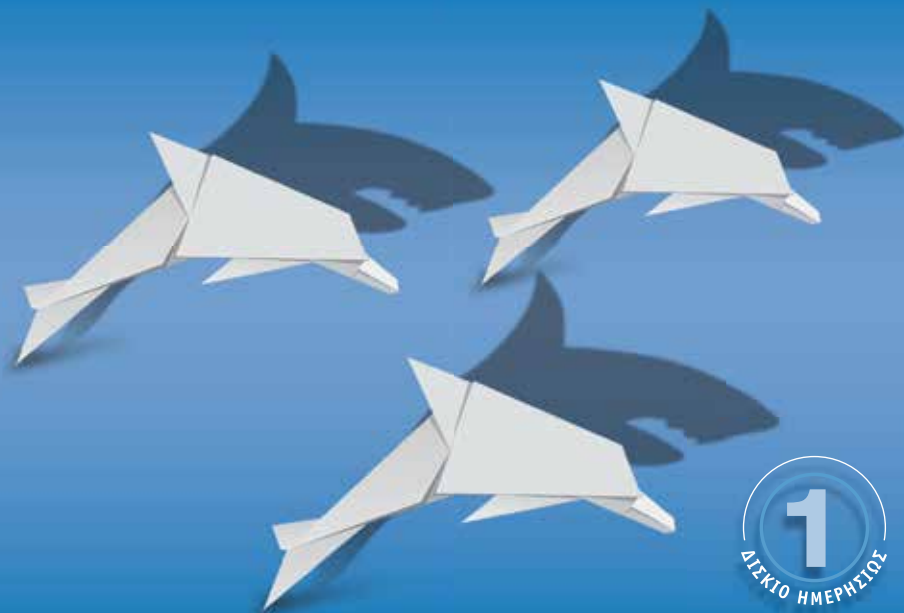
**Vlachakis Dimitrios**, MD, MSc, Infectious Diseases-Internal Medicine Consultant, 1st Internal Medicine Department, Papageorgiou Hospital, (Thessaloniki, Greece)

**Ziakas Antonios**, MD, PhD, Professor Cardiology, Aristotle University of Thessaloniki, (Greece)

**Zografou Ioanna**, MD, Ph.D, Consultant Physician in Internal Medicine and Diabetes, 2nd Propedeutic Department of Internal Medicine, Hippokraton General Hospital (Thessaloniki, Greece)

# Valsimia HCT<sup>®</sup>

αμλοδιπίνη/βαλσαρτάνη/υδροχλωροθειαζίδη



**ΟΝΟΜΑΣΙΑ ΤΟΥ ΦΑΡΜΑΚΕΥΤΙΚΟΥ ΠΡΟΪΟΝΤΟΣ** Valsimia HCT 5 mg/160 mg/12,5 mg επικαλυμμένα με λεπτό υμένιο δισκία, Valsimia HCT 5 mg/160 mg/25 mg επικαλυμμένα με λεπτό υμένιο δισκία, Valsimia HCT 10 mg/160 mg/12,5 mg επικαλυμμένα με λεπτό υμένιο δισκία, Valsimia HCT 10 mg/160 mg/25 mg επικαλυμμένα με λεπτό υμένιο δισκία, Valsimia HCT 10 mg/320 mg/25 mg επικαλυμμένα με λεπτό υμένιο δισκία. **ΠΟΙΟΤΙΚΗ ΚΑΙ ΠΟΣΟΤΙΚΗ ΣΥΝΘΕΣΗ** *Valsimia HCT 5 mg/160 mg/12,5 mg επικαλυμμένα με λεπτό υμένιο δισκία.* Κάθε επικαλυμμένο με λεπτό υμένιο δισκίο περιέχει 5 mg αμλοδιπίνης (ως αμλοδιπίνη βεσυλική), 160 mg βαλσαρτάνης και 12,5 mg υδροχλωροθειαζίδης. *Valsimia HCT 5 mg/160 mg/25 mg επικαλυμμένα με λεπτό υμένιο δισκία.* Κάθε επικαλυμμένο με λεπτό υμένιο δισκίο περιέχει 5 mg αμλοδιπίνης (ως αμλοδιπίνη βεσυλική), 160 mg βαλσαρτάνης και 25 mg υδροχλωροθειαζίδης. *Valsimia HCT 10 mg/160 mg/12,5 mg επικαλυμμένα με λεπτό υμένιο δισκία.* Κάθε επικαλυμμένο με λεπτό υμένιο δισκίο περιέχει 10 mg αμλοδιπίνης (ως αμλοδιπίνη βεσυλική), 160 mg βαλσαρτάνης και 12,5 mg υδροχλωροθειαζίδης. *Valsimia HCT 10 mg/160 mg/25 mg επικαλυμμένα με λεπτό υμένιο δισκία.* Κάθε επικαλυμμένο με λεπτό υμένιο δισκίο περιέχει 10 mg αμλοδιπίνης (ως αμλοδιπίνη βεσυλική), 160 mg βαλσαρτάνης και 25 mg υδροχλωροθειαζίδης. *Valsimia HCT 10 mg/320 mg/25 mg επικαλυμμένα με λεπτό υμένιο δισκία.* Κάθε επικαλυμμένο με λεπτό υμένιο δισκίο περιέχει 10 mg αμλοδιπίνης (ως αμλοδιπίνη βεσυλική), 320 mg βαλσαρτάνης και 25 mg υδροχλωροθειαζίδης.

Για συνταγογραφικές πληροφορίες συμβουλευθείτε την ΠΧΠ ή απευθυνθείτε στην εταιρεία ELPEN.

Φαρμακευτικό προϊόν για το οποίο απαιτείται ιατρική συνταγή.

Βοηθήστε να γίνουν τα φάρμακα πιο ασφαλή και Αναφέρετε ΟΛΕΣ τις ανεπιθύμητες ενέργειες για ΟΛΑ τα φάρμακα Συμπληρώνοντας την «ΚΙΤΡΙΝΗ ΚΑΡΤΑ»



**ELPEN A.E. ΦΑΡΜΑΚΕΥΤΙΚΗ ΒΙΟΜΗΧΑΝΙΑ**  
Λεωφ. Μαραθώνος 95, 190 09 Πικέρμι Αττικής,  
Τηλ.: 210 6039326-9, Fax: 210 6039300  
[www.elpen.gr](http://www.elpen.gr)

**ΓΡΑΦΕΙΑ ΕΠΙΣΤΗΜΟΝΙΚΗΣ ΕΝΗΜΕΡΩΣΗΣ**  
Σεβαστείας 11, 115 28 Αθήνα,  
Τηλ.: 210 7488711, Fax: 210 7488731  
Εθν. Αντιστάσεως 114, 551 34 Θεσσαλονίκη,  
Τηλ.: 2310 459920-1, Fax: 2310 459269

# *Eliquis*<sup>®</sup> apixaban

Για πλήρεις συνταγογραφικές πληροφορίες συμβουλευθείτε την Περίληψη  
Χαρακτηριστικών του Προϊόντος που διατίθεται από την εταιρεία.

PP-ELI-GRC-0306-NOV19



**PFIZER Ελλάς Α.Ε.** Λεωφ. Μεσογείων 243, 154 51, Αθήνα, Ελλάδα  
Τηλ. επικοινωνίας: 210 67 85 800, Αριθ. Γ.Ε.Μ.Η. 000242901000

**Βοηθήστε να γίνουν τα φάρμακα πιο ασφαλή και  
Αναφέρετε  
ΟΛΕΣ τις ανεπιθύμητες ενέργειες για  
ΟΛΑ τα φάρμακα  
Συμπληρώνοντας την «ΚΙΤΡΙΝΗ ΚΑΡΤΑ»**





# PMI SCIENCE

PHILIP MORRIS INTERNATIONAL

**PMI Science** — Το Τμήμα Έρευνας και Ανάπτυξης (R&D) της Philip Morris International (PMI) εργάζεται πάνω από μία δεκαετία για την ανάπτυξη **Προϊόντων Δυνητικά Μειωμένου Κινδύνου\*** σε σύγκριση με το συμβατικό τσιγάρο

Αναπτύσσουμε ευρύ χαρτοφυλάκιο προϊόντων αξιολογώντας τα με τα πιο αυστηρά επιστημονικά κριτήρια και μεθόδους

Στηρίζουμε την έρευνά μας στα πρότυπα Έρευνας και Ανάπτυξης φαρμάκων και σύμφωνα με τις οδηγίες διεθνών οργανισμών υγείας (π.χ. FDA)

[www.pmiscience.com](http://www.pmiscience.com)

*\*Προϊόντα Δυνητικά Μειωμένου Κινδύνου είναι ο όρος που χρησιμοποιεί η εταιρεία για να αναφερθεί σε προϊόντα που παρουσιάζουν ή πιθανόν να παρουσιάσουν μικρότερο κίνδυνο βλάβης για τους καπνιστές που επιλέγουν να χρησιμοποιήσουν τα προϊόντα αυτά αντί να συνεχίσουν το κάπνισμα με συμβατικό τσιγάρο.*

## SPONSORS



**Certificate of attendance will be given to the participants that will attend more than 60% of the scientific program**